

UNIVERSITY OF LATVIA

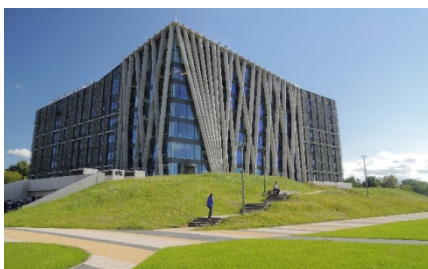
Erasmus code	LV RIGA01
PIC	999871830
Address	Raina Blvd. 19, Riga, LV-1586, Latvia
Website	https://www.lu.lv/en/
Rector	Acting rector Professor Guido Straube

INTERNATIONAL RELATIONS

Address	Raina Blvd. 19, Riga, LV-1586, Latvia
Website	https://www.lu.lv/en/admission/for-international-students/exchange/contacts/
Erasmus Institutional Coordinator	Mrs. Aline GRZIBOVSKA
Phone	+371 6703 3997
Fax	+371 6722 5039
E-mail	ad@lu.lv
Head of International Mobility Unit	Ms. Sintija MACULEVICA
Phone	+371 6703 3968
E-mail	sintija.maculevica@lu.lv
Contact person for outgoing students	Ms. Marta VILKAUSA
Phone	+371 6703 4406
E-mail	marta.vilkausa@lu.lv
Contact person for incoming students	Ms. Beate RAMINA – LO BELLO
Phone	+371 6703 4350
E-mail	beate.ramina@lu.lv
	Ms. Sintija URTANE
Phone	+371 6703 4336
E-mail	sintija.urtane@lu.lv
Contact person for IIA Erasmus+ agreements with Programme Countries	Ms. Beate RAMINA – LO BELLO
Phone	+371 6703 4350
E-mail	beate.ramina@lu.lv
Contact person for IIA Erasmus+ agreements with Partner Countries	Ms. Sintija URTANE
Phone	+371 6703 4336
E-mail	sintija.urtane@lu.lv

INFORMATION FOR INTERNATIONAL STUDENTS	
Academic calendar 2020/2021	
Autumn semester	
<i>registration week</i>	31.08.2020 - 06.09.2020
<i>studies</i>	07.09.2020 - 23.12.2020
<i>Christmas and New Year holidays</i>	24.12.2020 - 03.01.2021
<i>individual studies and exams</i>	04.01.2021 - 29.01.2021
Spring semester	
<i>registration week</i>	02.02.2021 - 07.02.2021
<i>studies</i>	08.02.2021 - 28.03.2021
<i>Easter holidays</i>	29.03.2021 - 05.04.2021
<i>studies</i>	06.04.2021 – 06.06.2021
<i>individual studies and exams</i>	07.06.2021 - 04.07.2021
Website	https://www.lu.lv/en/studies/study-process/academic-calendar/
Application deadlines	Autumn Spring May 15 th November 15 th
Nomination deadlines (by e-mail exchange@lu.lv)	Autumn Spring April 15 th October 15 th
Language of instructions	The official language of instruction is Latvian. Courses for international students are offered in English.
Language requirements	<u>English B1</u> Students applying for the following faculties have additional language requirements: Faculty of Humanities: <i>Bachelor level programmes:</i> English philology: English B2; Modern Languages and Business Studies: English B2; French philology: French, Italian or Spanish B1; German philology: German B1; Russian philology: Russian B1; <i>Master level programmes:</i> English philology: English B2; Romance studies: French, Italian or Spanish B2 German philology: German B2; Russian philology: Russian B2 Faculty of Medicine: Medicine and Dentistry programmes: B2
Application information for incoming students	https://www.lu.lv/en/admissions/exchange-studies/
Accommodation information	https://www.lu.lv/en/studies/student-life/accommodation/

Courses for incoming students	https://www.lu.lv/en/admission/for-international-students/exchange/courses/
Immigration information	https://www.lu.lv/en/admission/for-international-students/exchange/visas/
General and Practical information for incoming students	https://www.lu.lv/en/admission/for-international-students/exchange/
Credit points	1 Latvian credit point = 1.5 ECTS
Approx. expenses per month	
Accommodation	100 – 300 EUR
Food & drinks	300 EUR
Books	20 EUR
Local Transportation	30 EUR
<i>Total</i>	<i>450 – 650 EUR</i>



INTERNATIONAL COORDINATORS AT FACULTIES

FACULTY OF BIOLOGY	
Departmental Coordinator	Assoc. prof. Liga OZOLINA-MOLLA
E-mail	liga.ozolina-molla@lu.lv
FACULTY OF CHEMISTRY	
Departmental Coordinator	Doc. Agnese OSITE
E-mail	agnese.osite@lu.lv
FACULTY OF COMPUTING	
Departmental Coordinator	Prof. Juris BORZOVS
E-mail	juris.borzovs@lu.lv
FACULTY OF BUSINESS, MANAGEMENT AND ECONOMICS	
Departmental Coordinator	Ms. Zane SVILANE
E-mail	zane.svilane@lu.lv
FACULTY OF EDUCATION, PSYCHOLOGY AND ART	
Departmental Coordinator	Ms. Laura FOMINA
E-mail	laura.fomina@lu.lv
FACULTY OF GEOGRAPHY AND EARTH SCIENCES	
Departmental Coordinator	Prof. Zaiga KRISJANE
E-mail	zaiga.krisjane@lu.lv
FACULTY OF HISTORY AND PHILOSOPHY	
Departmental coordinator for Department of History and Archaeology	Asoc. Prof. Raimonds CERUZIS
E-mail	raimonds.ceruzis@lu.lv
Departmental coordinator for Department of Philosophy and Ethics	Dr. Artis SVECE
E-mail	artis.svece@lu.lv

INTERNATIONAL COORDINATORS AT FACULTIES

FACULTY OF HUMANITIES	
Departmental Coordinator	Ms. Anastasija VEDELA
E-mail	anastasija.vedela@lu.lv
FACULTY OF LAW	
Departmental Coordinator	Ms. Daina ANDREJEVA
E-mail	daina.andrejeva@lu.lv
FACULTY OF MEDICINE	
Departmental Coordinator	Mr. Ivars PEKAINIS
E-mail	ivars.pekainis@lu.lv
FACULTY OF PHYSICS AND MATHEMATICS	
Departmental Coordinator, Coordinator for Department of Physics	Dr. Janis CIMURS
E-mail	janis.cimurs@lu.lv
Coordinator for Department of Mathematics	Assoc. prof. Ingrida ULJANE
E-mail	ingrida.uljane@lu.lv
Coordinator for Department of Optometry	Aija TOLSTOJA
E-mail	aija.tolstoja@lu.lv
FACULTY OF SOCIAL SCIENCES	
Departmental Coordinator:	Ms. Aleksandra KJAKSTE
E-mail	aleksandra.vonda@lu.lv
FACULTY OF THEOLOGY	
Departmental Coordinator	Doc. Janis RUDZITIS-NEIMANIS
E-mail	janis.rudzitis@lu.lv